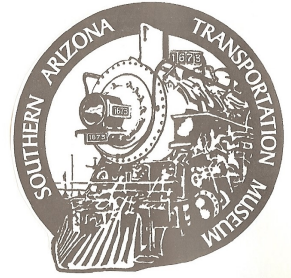





December, 2014

Quarterly News for **Old Pueblo Trolley**

Street Railway, Motor Bus & Museum Divisions



PROPERTY PURCHASE – HALF THE PRICE PLEDGED – NEED YOUR HELP



Old Pueblo Trolley, Inc. (OPT) and its Southern Arizona Transportation Museum (SATM) have a unique opportunity to purchase a 30,000 square foot building on 60,000 square feet of property (half a city block) at South Fourth Avenue and Thirty-Sixth Street in the City of South Tucson. Two generous donors have committed to provide half the purchase price in cash. **BUT, we have to match the other half within 60 to 90 days** – and in addition need to raise money to refurbish the building and grounds, set up initial museum displays, and move equipment and vehicles in.

This property will be used for a static display transportation history museum initially focusing on the history of Tucson's streetcars, display of OPT's collection of streetcars and buses and SATM's collection of railcars. In addition shop space will be provided for historic vehicle restoration, and hands-on training in restoration techniques. Space will also be provided for preservation of historic vehicles awaiting restoration and display, along with office and administrative use.

We hasten to add that this opportunity is for expansion of our mission and the existing needs outlined below. We have no intention of abandoning SATM's great museum at the depot nor OPT's trolley operations base on 8th Street behind O'Malleys.

THE NEED: Despite the impressive accomplishments of the volunteers for all three divisions, and the raising of substantial sums of money by successfully obtaining grants for individual projects, many needs have gone unmet.

Restoration/refurbishment and maintenance of trolleys continues to be done in the dirt, only partially covered with an inadequate sized inspection pit. Two wood-bodied streetcar bodies, currently stored outside, need to be moved inside before they completely fall apart.

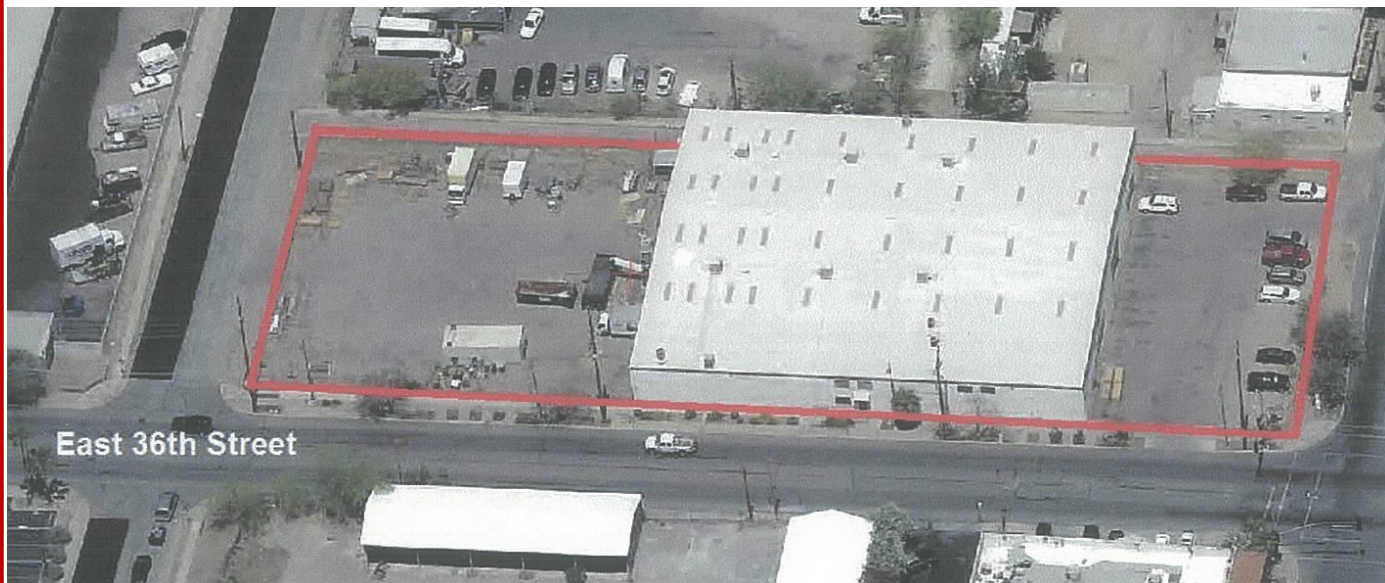
Motor bus restoration is done in a space rented from the city that will soon be needed for the widening of Broadway. The space is too small to meet needs, particularly a robust training program. A higher quality, restoration/maintenance space is needed with room to protect restored buses.

The Museum Division lacks protected space for preservation of their historic railcars, especially their 1917 wood bodied boxcar. They also lack adequate, climate controlled space to preserve donated artifacts and memorabilia.

Meeting all these needs in a single large facility that can also accommodate our long-term vision is OPT/SATM's top priority. After considering some 40 properties, the Board of Directors has agreed to pursue funding for purchase of property at S. 4th Avenue and 36th Street,

MORE ON THE PROPERTY: The property has adequate paved parking along 4th Avenue for about two dozen autos. The back lot is paved and completely fenced with chain link fencing with razor wire on top providing secure preservation storage for up to 30 large vehicles along with rail, ties and other railway related materials.

The building is steel with a free-span interior measuring some 110' x 175', allowing adequate shop space and interior vehicle display and preservation storage. Along the 36th Street side are two-story offices which will be used for static museum display, library/archive space, and office space. The office space is heated (gas) and cooled (air conditioned), while the warehouse space is cooled with six evaporative coolers on the roof. Also on the roof are 32 skylights providing great interior lighting saving on electricity. Access is through 3 pedestrian doors, one on each side of the building except the north. Three large vehicle doors are on the east and west ends.



The bank that owns the property is asking \$950,000. OPT leadership of course hopes it can be acquired for less, but is beginning a fundraising campaign to raise \$500,000 which will match the amount committed by the two individual donors with additional necessary for inspections and closing costs. In addition, the campaign will attempt to raise another \$150,000 to be used for moving expenses and building refurbishment.

NEED YOUR HELP: The generous help of all OPT/SATM members and friends is needed to make this dream a reality. Over the years we have made it a policy not to besiege you with repeated requests for donations, and have lived with money from memberships, donations and grants for projects without making special appeals. However, the magnitude of this opportunity, made achievable by the largest private donation ever offered our organization, leads us to make a special appeal asking for one-time sacrificial gifts to move OPT/SATM into the future. So please consider how you can help to the maximum extent possible. If you wish to spread your donation out over time, send us your pledge with the terms that work for you. Pledges will be helpful if we have to finance a portion of the purchase price, and moving and building refurbishment expenses will likely be spread out over the next year or more. Send your donation to Old Pueblo Trolley, P. O. Box 1373, Tucson, Arizona 85702. Pledges may be sent to the P. O. Box or to Gene Caywood at caywoodgm@juno.com or 360-0268. If you have any questions, please contact Gene.

**SOUTHERN ARIZONA TRANSPORTATION MUSEUM
PRESENTS the**

**10TH ANNUAL HOLIDAY EXPRESS WITH SANTA
At the Historic Train Depot**



Talk with **Santa** and Enjoy Holiday Music

Write a letter to Santa at the North Pole:

With the Tucson Postal History Museum Elves' help

Look at the museum's bilingual exhibits

With operating model trains

**Face Painting with Claudia the Choo Choo the
Clown and Craft Show. Photo with Santa in front
of Locomotive 1673**

(the star of the movie "Oklahoma")

Climb into the cab of steam Locomotive 1673

Receive Goodies from AMTRAK

View the Railroad art exhibits and train layout in the Amtrak Lobby

Saturday, Dec. 20, 2014

**1-4 pm Sponsored by Jim Click and
the Donas of Tucson**

414 N. Toole at the Historic Depot

Free Parking around the Depot

520-623-2223



Railroad China Exhibit

Museum member Randy Hill, retired rail-roader has loaned his exquisite railroad dining car china collection to the museum for display. Be sure to look for it.

The Surridge Family birthday party hosted at SATM



Akiko and Michael chose the SATM platform as the location for their wedding



Paul Horky, railroad historian and long time OPT volunteer will be in charge of the display of Engine 1673 while Gene Anderson is recovering from a health issues.



TO:

P.O. Box 1373, Tucson, AZ
85702

Newsletter Editor: Ron Dawson
upper14@aol.com

Website

www.oldpueblotrolley.org

Quarterly Newsletter

December 2014

Bus and Streetcar News coming in the next quarterly newsletter!

Save these dates:

Mar 21st at 10 AM

ANNUAL SILVER SPIKE FESTIVAL

Celebrating the Arrival of the Railroad in 1880

Celebrating the 10th Anniversary of the Southern Arizona Transportation Museum with cake and a Proclamation by our Mayor

Also, at High Noon-The Tombstone Vigilantes will perform with a Reenactment of the Stillwell-Earp incident of 1882.

Lecture Series

Feb. 15 -- The Mascot & Western RR and the Johnson, Dragoon & Northern RR by Richard Dick

Feb. 22 -- Epes Randolph by Art Carlton

Mar. 1 -- The Story of GM's William Durant by Axel Holm

Mar. 8 --Early Southern Arizona Aviation by Bill Kalt

Mar. 22 --TBA

- ◇ Old Pueblo Trolley is a not-for-profit operating transportation museum consisting of three divisions;
- ◇ Tom Gorman, Vice President, Street Railway Div.
- ◇ Roger Hobbie, Vice President, Motor Bus Div.
- ◇ Ken Karrels, Vice President, Museum Div.
- ◇ CEO: W. Eugene Caywood email: caywoodgm@juno.com

Become a member of Old Pueblo Trolley

Mail form and payment to PO Box 1373, Tucson, AZ 85702

NAME _____ PHONE _____

EMAIL _____

ADDRESS _____ ZIP _____

New Member ___ Renewal ___ DATE _____

Please check the appropriate membership donation category:

Student/Senior \$15 ___ Regular \$25 ___

Honorary Motorman \$50 ___ Contributor \$100 ___

Donor \$250 ___ Sponsor \$500 ___

Benefactor \$1000 ___ Life \$2500 ___

Division interest: Streetcar ___ Bus ___ Museum ___ All ___